

CHELSEA® 272-FORD SERIES

PTO for Ford 6R140 Transmission

The Chelsea 272F Series PTO features all the robust power density of the 272 specifically designed for the FORD 6R140 TorqShift® 6 speed transmission on the F-650/F-750 chassis. High capacity bearings and superior gear design provide torque ratings up to 300 ft-lbs*. The superior design of the 272-FORD allows you to take full advantage of all the power available on the transmission with 6.8L gas or 6.7L diesel engines. There are multiple ratios, output types, and shift options to make it a versatile PTO for the F-650/F-750. It is available with Electronic Overspeed Control (EOC) and SmartStart options to protect your equipment and extend the life of your truck, there by maximizing work and profits. It can be used in both Mobile or Stationary modes. The 272-FORD is the best PTO choice for your FORD truck.

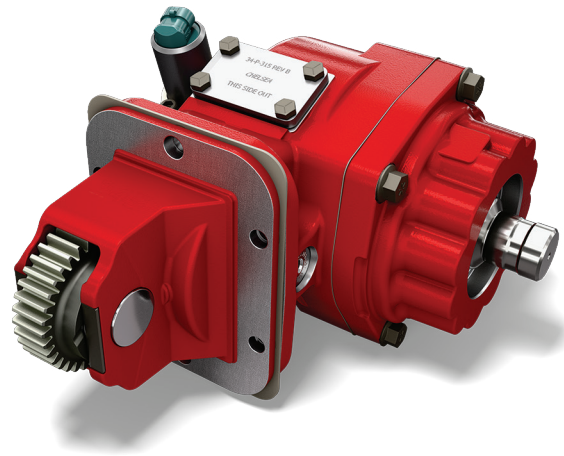
Applications:

- Tow & Recovery
- LP Gas
- Water Trucks
- Service Trucks
- Aerial
- Dump
- Refuse

Product Features and Benefits:

- Torque – Ratings up to 300 lbs-ft.*
- Clearance – Interference issues have been reduced with compact housing.
- Positive Stop – Driveline outputs; eliminates oil seal damage from coupling.
- Speeds – Multiple speeds available.
- SmartStart Available – Shock load dampening feature to protect driven equipment.

*See Chelsea Application Catalog for details.

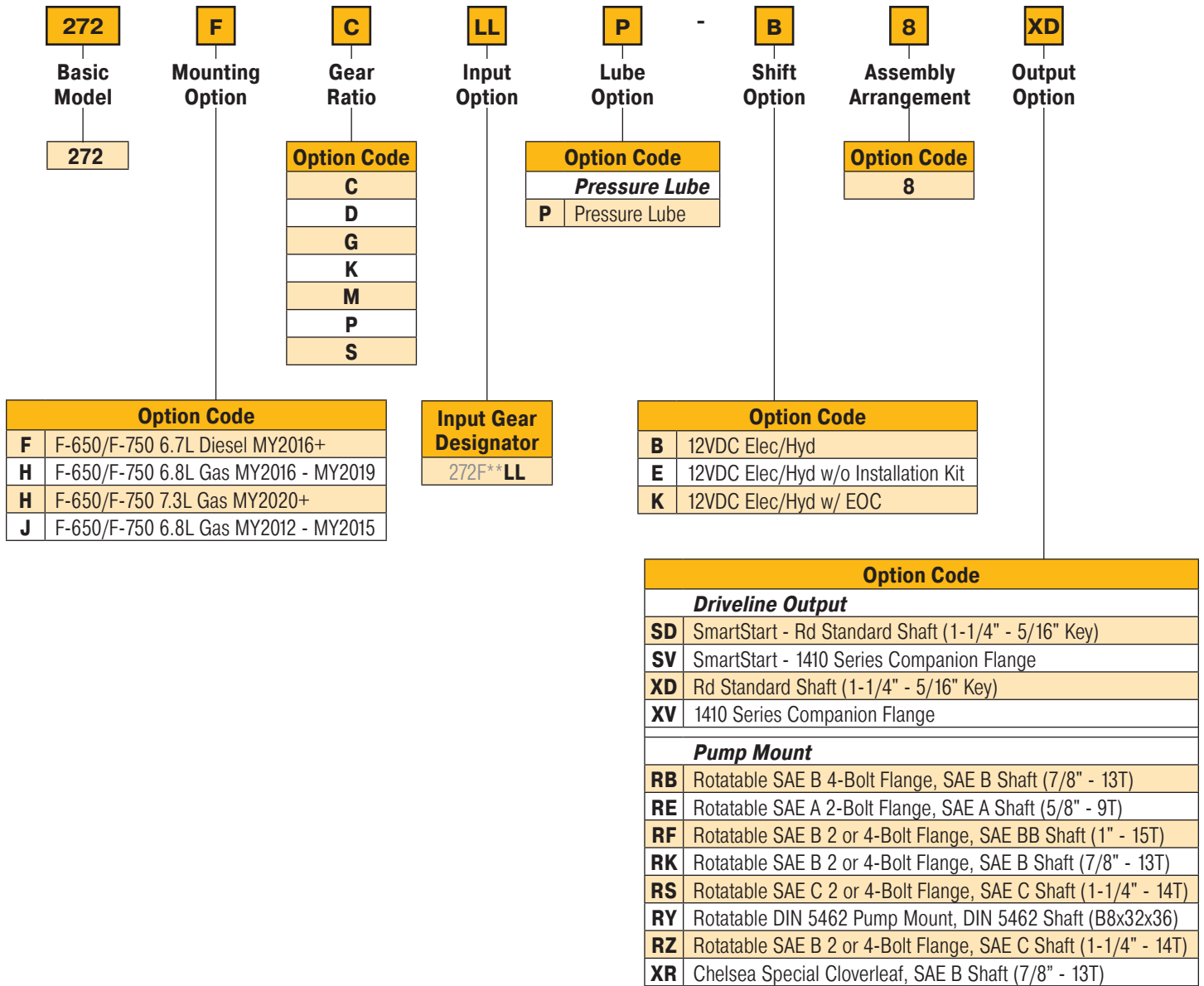


272-FORD Series



272-FORD Series Power Take-Off – Ford

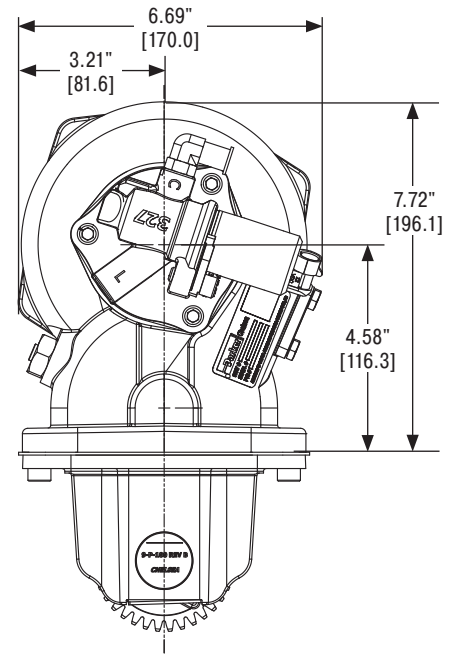
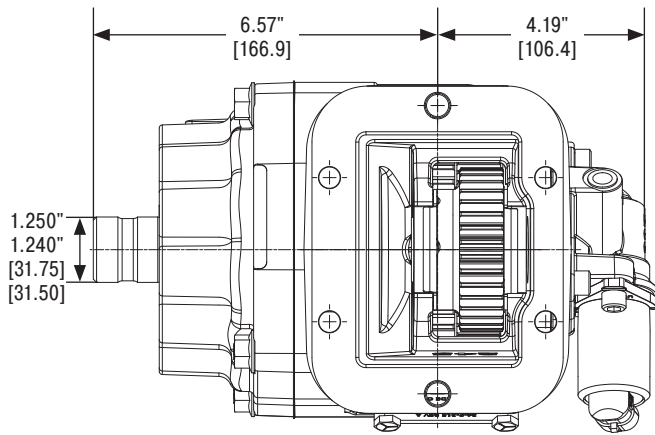
Model Number Designator & Specifications



| Specifications Chart | Approximate Weight: 55 lbs. [25 kg] | | | | | | |
|---|-------------------------------------|-----------|-----------|-----------|-----------|-----------|-----------|
| | 272*CLL | 272*DLL | 272*GLL | 272*KLL | 272*MLL | 272*PLL | 272*SLL |
| Intermittent Torque Rating lb-ft [N-m] | 300 [407] | 300 [407] | 300 [407] | 300 [407] | 274 [371] | 246 [333] | 220 [298] |
| HP Rating for Intermittent Service | | | | | | | |
| At 500 RPM of Output Shaft HP [kW] | 29 [21] | 29 [21] | 29 [21] | 29 [21] | 26 [19] | 23 [17] | 21 [16] |
| At 1000 RPM of Output Shaft HP [kW] | 57 [43] | 57 [43] | 57 [43] | 57 [43] | 52 [39] | 47 [35] | 42 [31] |
| NOTE: Ford limits the 6R140 transmission to 60 HP for Diesel Engine and 40 HP for Gas Engine applications. | | | | | | | |

272-FORD Series Power Take-Off – Ford

Dimensions – For PTO output information see application catalog



Assembly Arrangement 8

Parker Hannifin Corporation
Chelsea Products Division
8225 Hacks Cross Road
Olive Branch, MS 38654 USA
phone 1-888-PH4-TRUK (1-888-744-8785)
chd_support@support.parker.com
www.parker.com/chelsea

HY25-0193-B1/US November 2025

© 2025 Parker Hannifin Corporation

